

Create a private key using the following instructions.

1. Visit the key generator website (<https://www.wpoven.com/tools/create-ssh-key>).
2. Leave the “password” field blank.
3. Set the “type” to rsa (the default).
4. Set the “length” to 4096.
5. Press Create Key.

Generate SSH Key Pair Online

Form fields for generating an SSH key pair online:

- Password:
- Type:
- Length:
- Create Key:

If password is needed

6. Under the box labeled “Private Key” press download and save this file

Private Key

```
-----BEGIN OPENSSH PRIVATE KEY-----
b3B1bnNzaC1rZXktbjEAAAAABG5vbmUAAAAAEbm9uZQAAAAAAAAABAAACFwAAAAAdzc2gtcn
NhAAAAAwEAAQAAAE1pbnBMK013AQu1Lbvnfsx4U3apS3Nc00ZCJMfEhbomwOUG3CR2BiS
3RrDoCoqUURmwAtPN5/OsABo65ppoasjMxbfk/Miy3GSFH4QimUtwsWE09LHxfuwl3ke3
10aEebb/hPZ8A/APhZVZLsmrMJUc6iif8X7S0g0sbz1dFCwYuK1qM0ZNd3j0Hv4W1RrC0K
1D2GPPJ/bZVscTLk7xL6dkAPAj57Tbb4Jos5W1mwsbWJn7rQZwm1PyQ38Z6/qFAMcjt1c3
21JA/mbzk2hc9hbTVHhiZbaJ3VrMz/FupoMnizfRbWeg6PU5VtHMraNx57Qqej7q4BiIdn
EgDXQliAS60RSFgYoq1FyILSDEBz34uMYAEzVzUcWesasVCD64La/ef8BB0zQ+xkT2uFA1
8YJqREqpdasScuPkUTKnOU1UjBcRGwEOWK4TV3HDcGTn67mEJbx7JAdm+6Jsh8w8TBaAxw
```

[Copy to Clipboard](#) [Download](#)

Public Key

```
ssh-rsa
AAAAB3NzaC1yc2EAAAADAQABAAQCAQDwmcEwrTXcBC6Utu+d+zHhTdqlLc1w7RkIkx8SFuibA5QbcJHYGJLdGsOgKipRRG
bAC2k3n86wAGjrmhmqyMzFt+T8yLLcZIUfhCKZS1axYTT0sff+7CW/eR7fXR0R5tv+E9nwD8A+F1vkuyasw1RzqKIXxft
LSDSxvPV0ULBi4rWozRk13eM4e/hbVGS1QqUPYY+kn9t1WxxMuTvEvp2QA8AnntNtvgmizlaWbCxtYmfutBnCbU/JDfxnr
+oUAxyO2VzfaUkD+Zv0TaFz2FtNUeGJltondwszP8W6mgyeLN9FtZ6Do9T1W0cyto3HntCp6PurgGIh2cSANDCWIBLrRFI
WBiiUXIgtIMQHPf14xgAT0/NRxZ6xqxUIPrgr95/wEE7ND7GRPa58DXxgmpESq11pJy4+RRmqdB5UeMFxEbGgQ4crUhX
ccNwZ0fruYQ1vHskB2b7omwFzDxMFoDHCvzIatyuxpRnluA1hze6u+YFS7ErEkChDk9U1/bjfhF7DQ7y+qc6Pt4BHECdP
/VANsE/Yxrw04ozejiqeA4dY/qQpu9I/YByo/0nm3vrQv4mG+jb4Jw+x6z8xnxjUSmiTrDTUTES17CUYtVz8QUZ0daAAZ2
fNXmiUBa2MB8GnbqEcRrIo+FF5HP9DhTofs+2d1bywTIEcPNEMTXU8JQ== noname
```

[Copy to Clipboard](#) [Download](#)

7. Under the box labeled “Public key”, press copy to clipboard and paste this into an email to the JPL Informatics Center. Your email must include:

- Your newly generated public key (pasted in)
- Your name
- Your institutions name
- The name of the project you will be uploading data to (e.g. “EDRN Prostate MRI”).

Public Key

```
ssh-rsa
AAAAB3NzaC1yc2EAAAADAQABAAQDQWmcEwrTXcBC6Utu+d+zHhTdqlLc1w7RkIkx8SFuibA5QbcJHYGJLdGsOgKipRRG
bAC2k3n86wAGjrmhmqyMzFt+T8yLLcZIUfhCKZS1axYTT0sFF+7CW/eR7fXROR5tv+E9nwD8A+F1vkuyasw1RzqKIXxft
LSDSxvPV0ULBi4rWozRk13eM4e/hbVGsLQqUPYY+kn9t1WxxMuTvEvp2QA8AnntNtvgmizlaWbCxtYmfutBnCbU/JDfxnr
+oUAxy02VzfaUkD+Zv0TaFz2FtNUeGJ1tondWszP8W6mgyeLN9FtZ6Do9T1W0cyto3HntCp6PurgGIh2cSANDCWIBLrRFI
WBiiUXIgtIMQHPfi4xgATO/NRxZ6xqxUIPrgr95/wEE7ND7GRPa58DXxgmpESq11pJy4+RRMqdBSUeMFxEbGgQ4crUhX
ccNwZ0fruyQ1vHskB2b7omwFzDxMFoDHCvzIatyuxpRnluA1hze6u+YFS7ErEkChDk9U1/bjfhF7DQ7y+qc6Pt4BHECdP
/VANsE/Yxrw04ozejiqeA4dY/qQpu9I/YByo/0nm3vrQv4mG+jb4JW+x6z8xnxjUSmiTrDTUTES17CUYtVz8QUZ0daAAZ2
fNXmiUBa2MB8GnbqEcRrIo+FF5HP9DhTofs+2dlbywTIEcPNEMTXU8JQ== noname
```

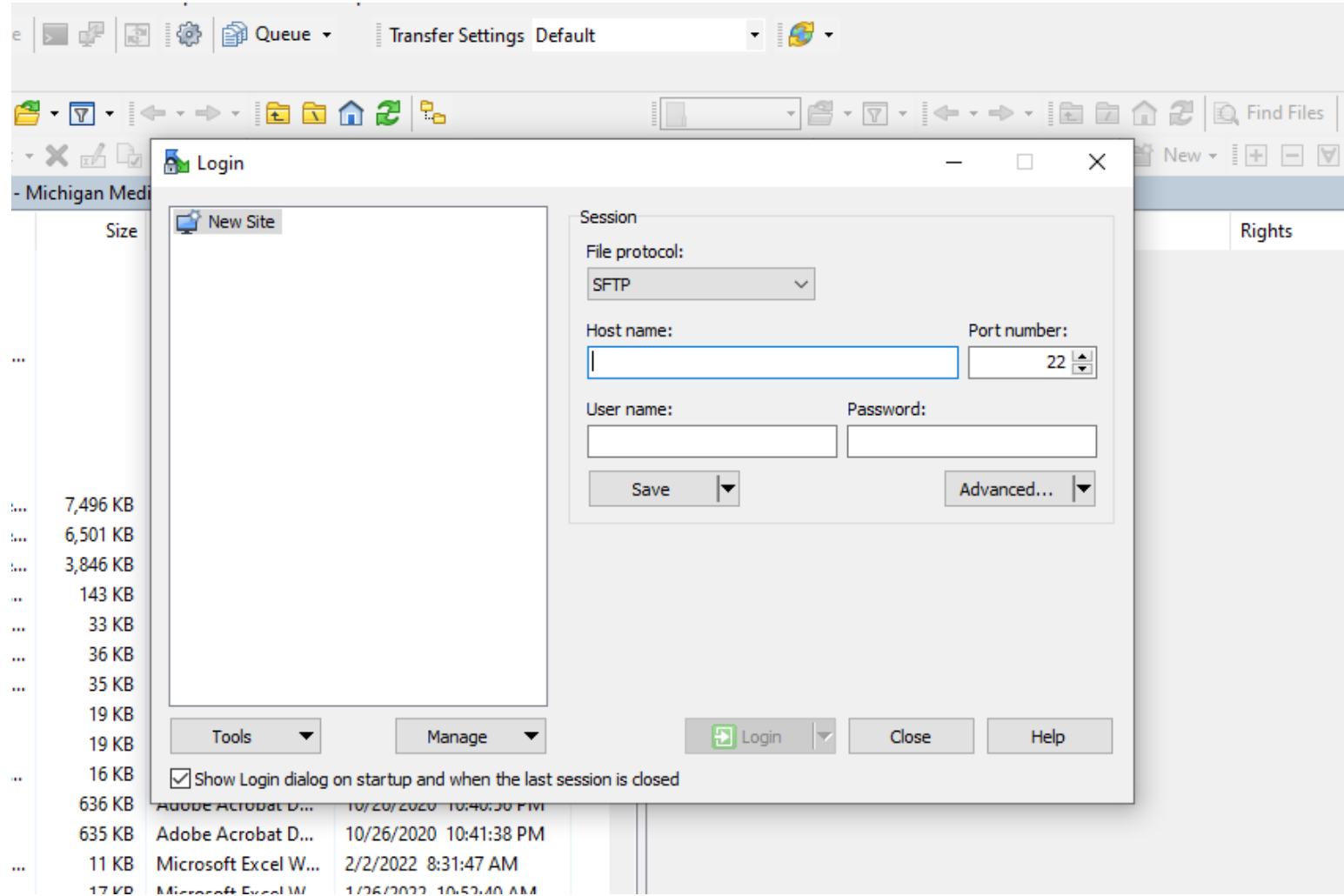
Copy to Clipboard

Download

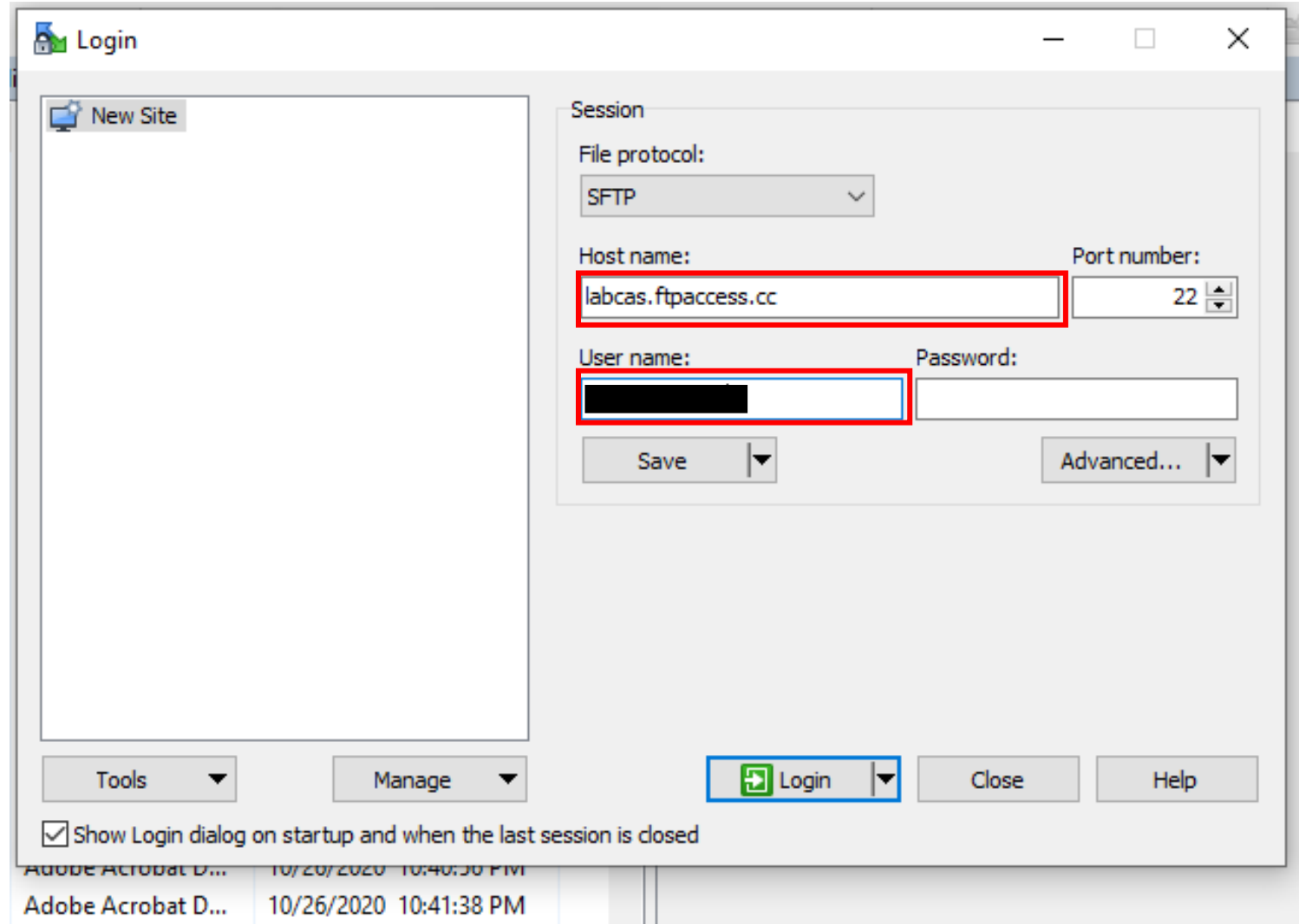
Once JPL team processes the email, you will be sent your SFTP username and will be ready to upload data.

Download the program “WinSCP”

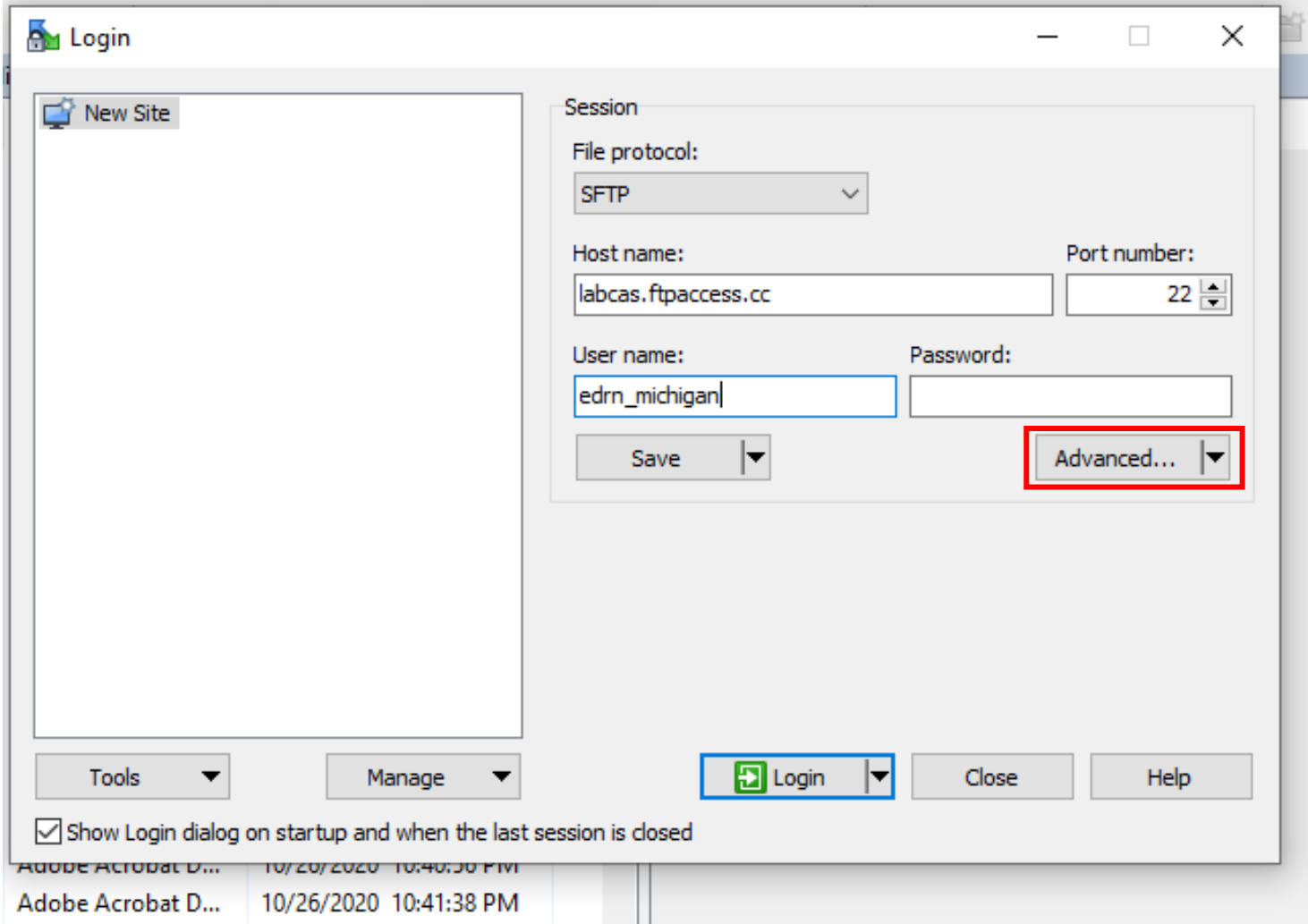
Open “WinSCP”



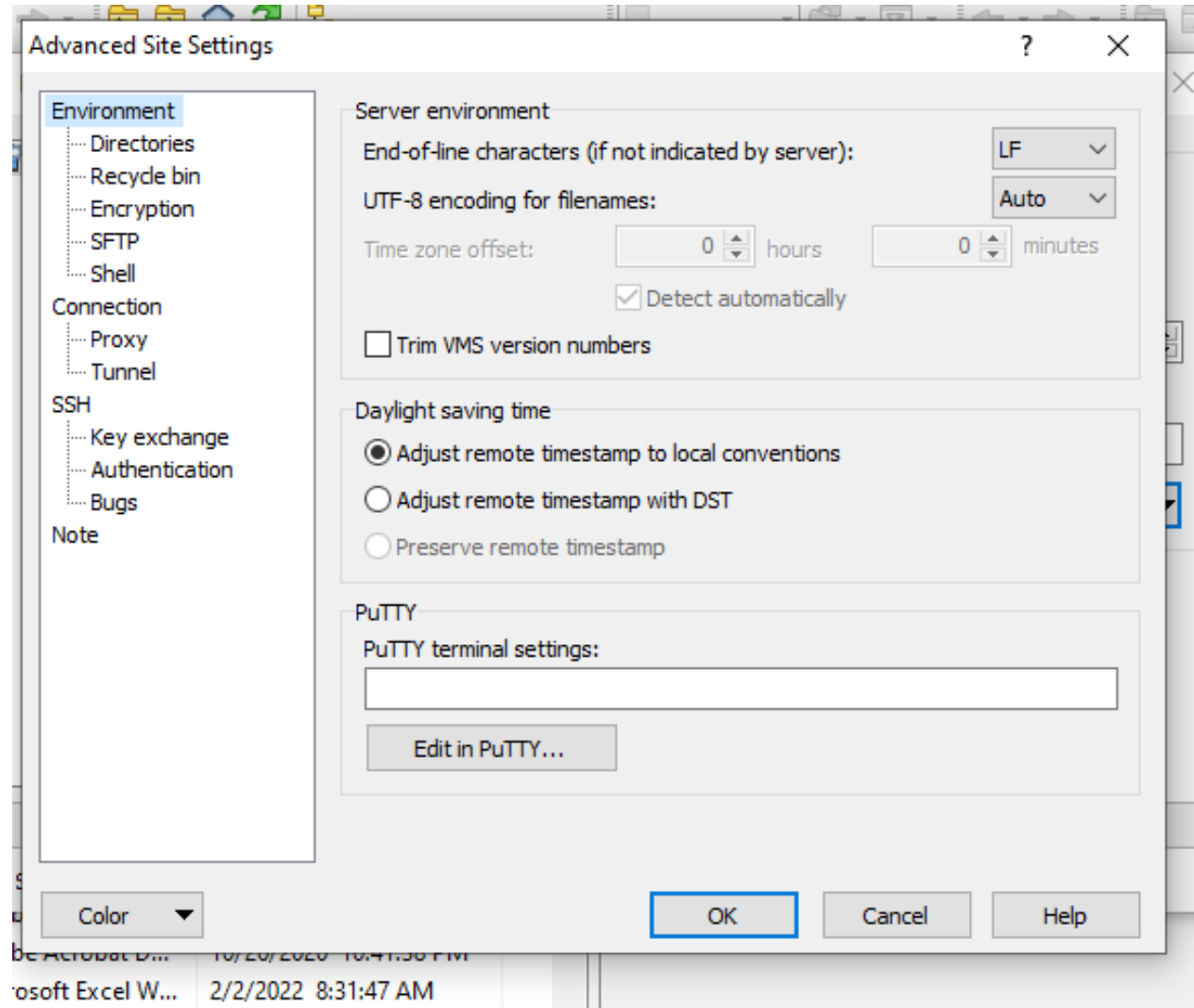
Enter in the host name and the username given to you by JPL



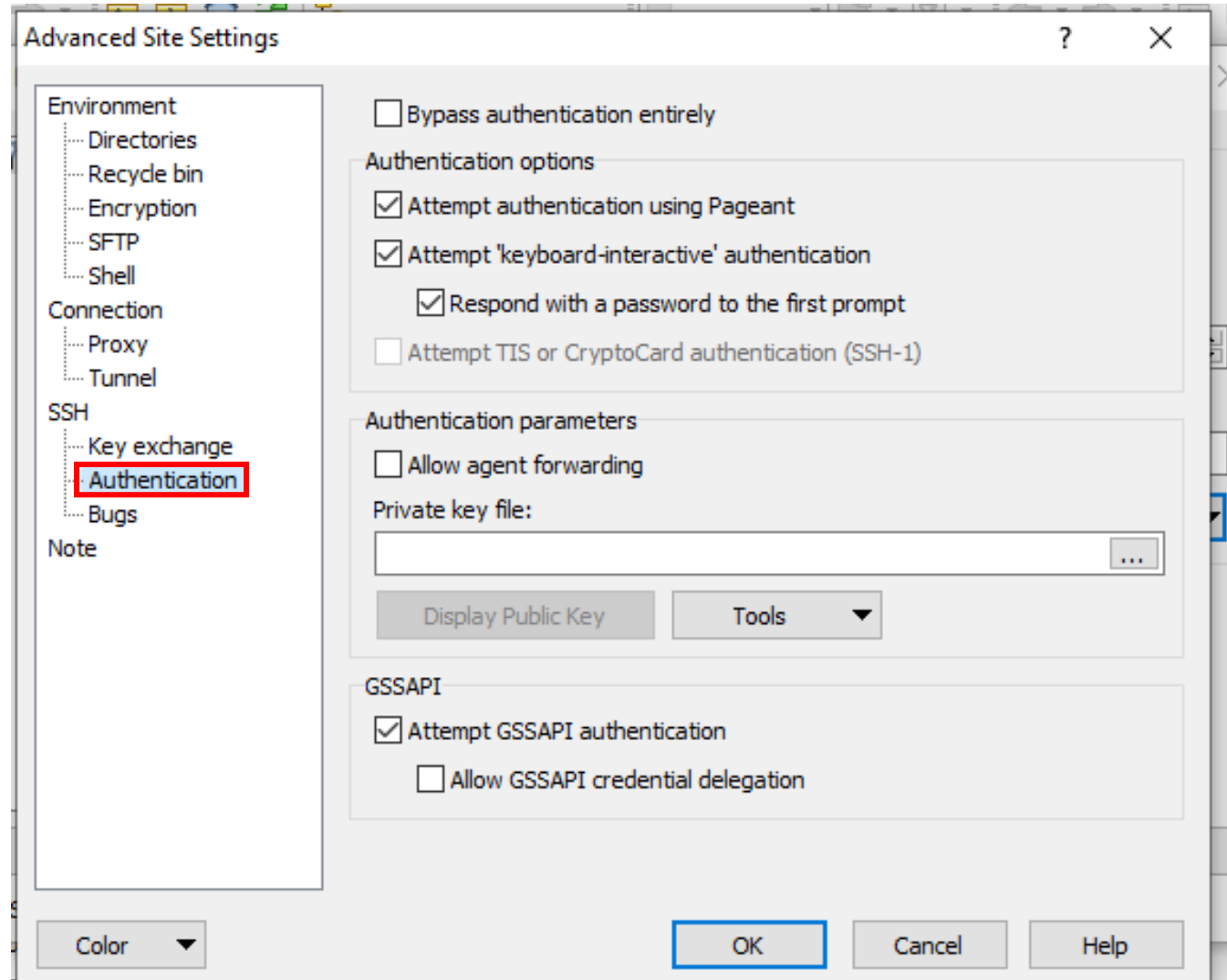
Click the Advanced button under the password field



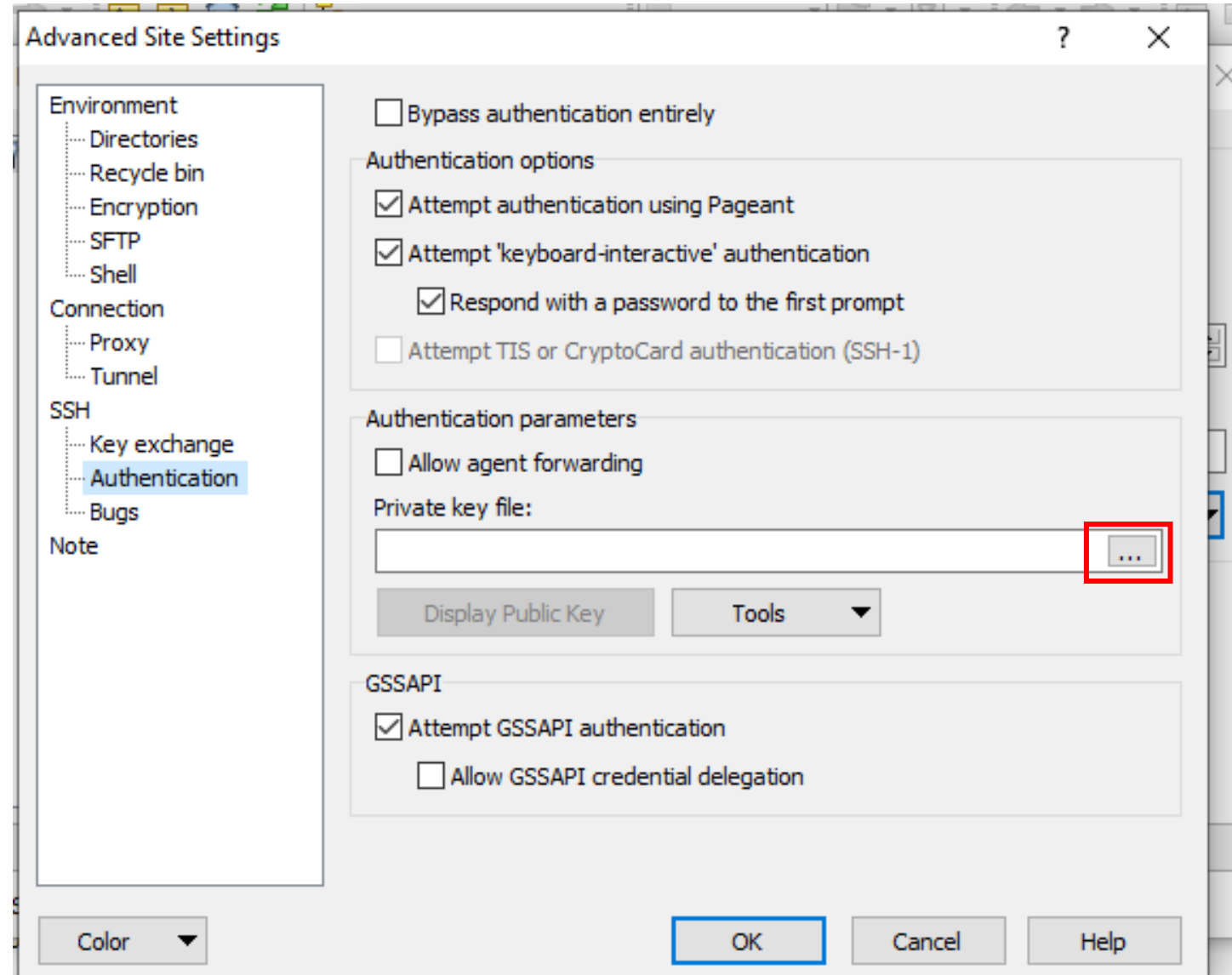
After clicking Advanced, this pop-up will appear



Click on “Authentication” under the SSH header

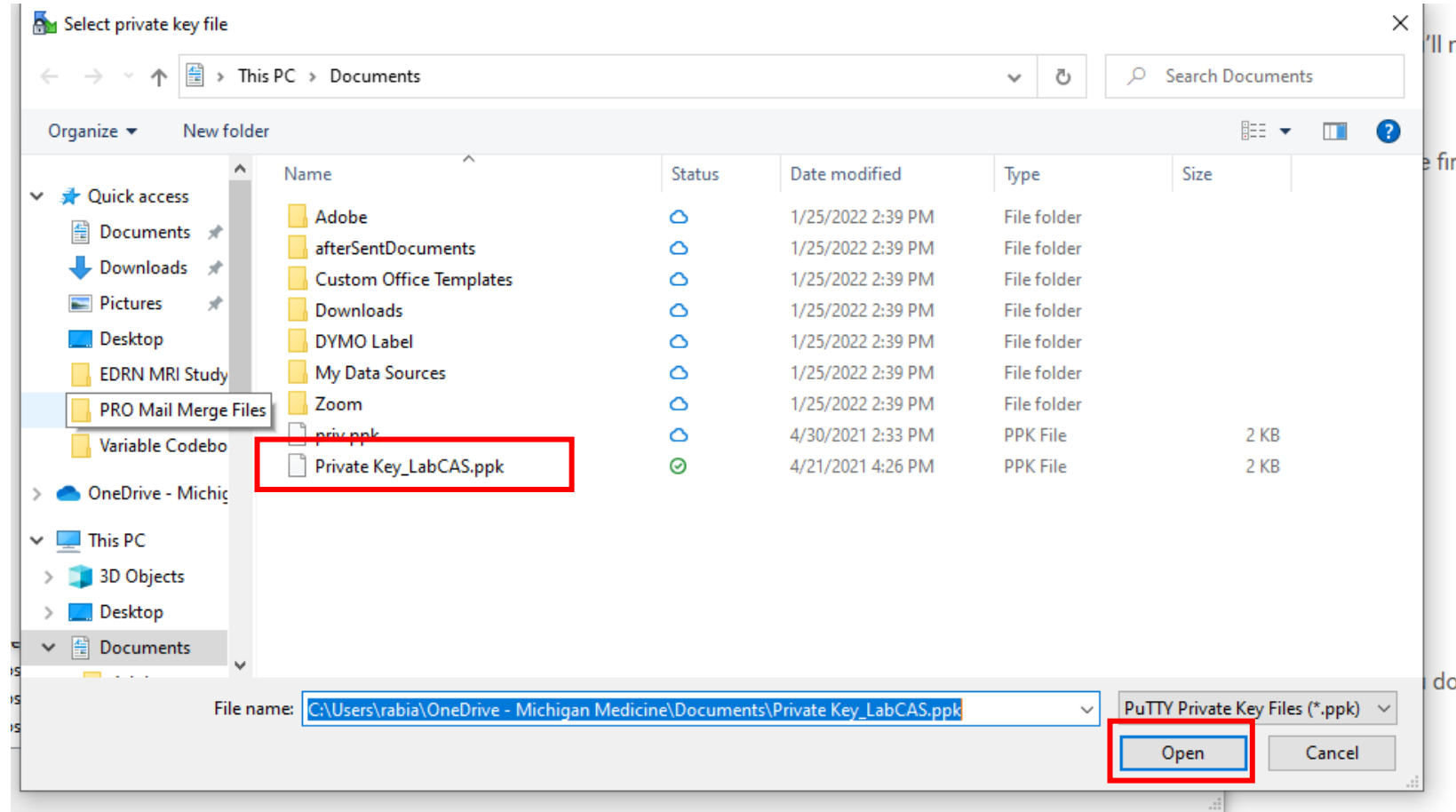


Click on the ellipsis in the Private key file field

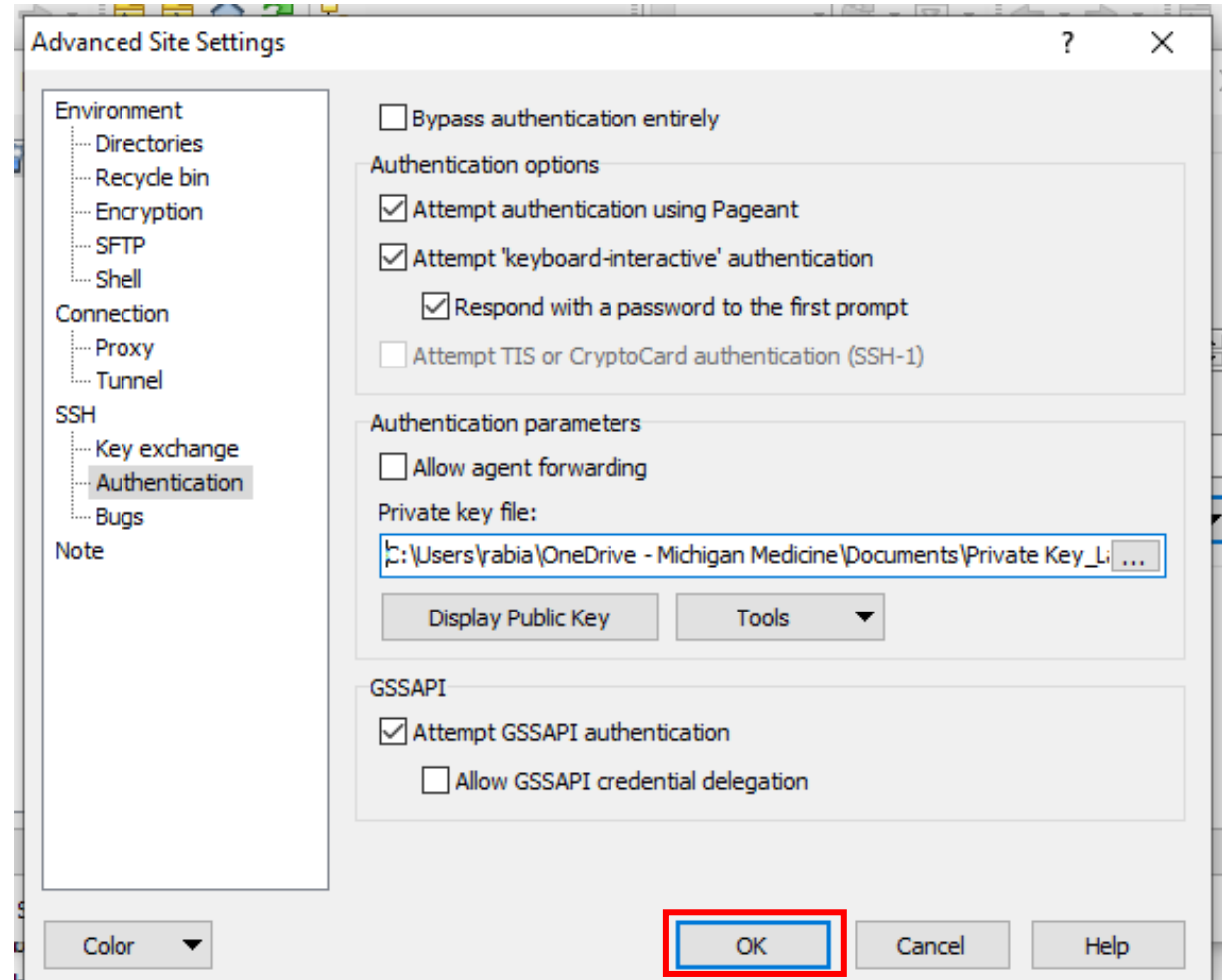


Insert the private key that was created in the first slide

Then press open

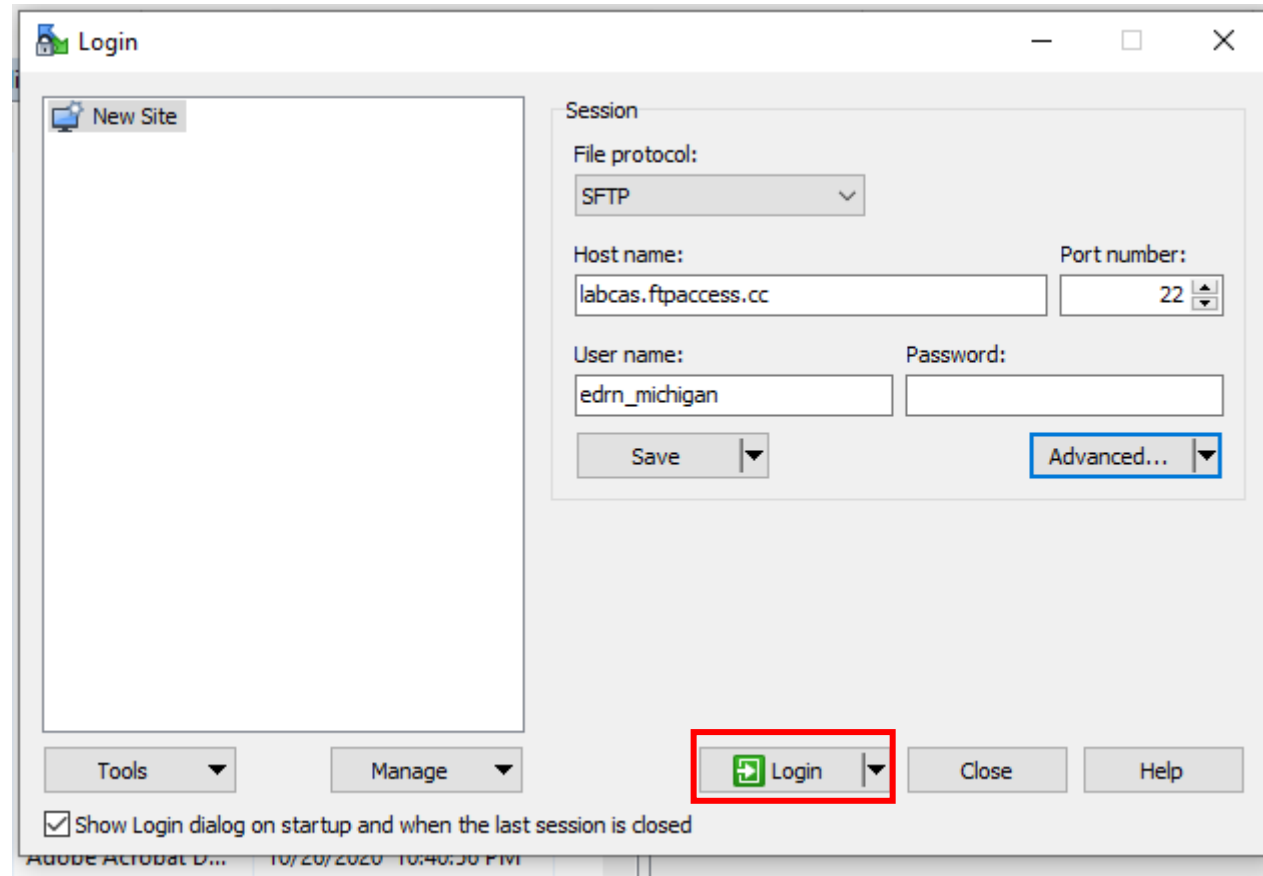


Once the private key file field has been updated, press OK



You will then be directed back to this screen.

Press Login.



You will then see this connection occurring.

Once the connection is complete, you can upload files

